



COMPASS IRONWORKS



S-01

STAIRS DESIGN GUIDE

VOLUME 4. ALL RIGHTS RESERVED, COMPASS IRONWORKS 2024



COMPASS IRONWORKS

Elegance and Integrity

At Compass Ironworks, we carry into the 21st century the Amish traditions that forged our artistic sensibilities: honesty, integrity, and dedication to family, community, and craft. We do no mass production here; every installation reflects your unique needs. We are master craftsmen who work with both traditional and 21st century tools. At the end of the day, we close the doors and leave our tools at the shop, not to be touched until the next workday begins.

For more information about Compass Ironworks, please contact us Monday through Friday at (717) 442-4500.



STAIRS DESIGN GUIDE

STAIRS DESIGN GUIDE.....	4
DOUBLE HELICAL STAIRCASES.....	5
DESIGNER STAIRCASES.....	14
MONO-STRINGER STAIRCASES	23
SPIRAL STAIRCASES	28

When you see these icons on pages throughout the Design Guide, it indicates the following:



Enhanced Physical Perimeter Security



Shore Environment Approved

In a home with multiple levels, stairs provide access to those multiple floors. They can be floating stairs, glass staircase, contemporary spiral staircase or traditional curved stairs, the options on endless.

However, there is a huge surge of interest in specifying structural steel stairs and utilizing a variety of materials to showcase the interior designer, architect or clients own sophisticated design statement. Masonry, bronze, reclaimed, glass, stainless, wood and Iron materials. These materials are being utilized in all aspects of the stairs, treads, risers railing and handrail.

What used to be a given, install a traditional stair, has now turned into a phenomenal design opportunity for designers, selecting their design forte of contemporary, traditional, rustic, modern, eclectic or reclaimed to make their wow factor in design uniquely theirs.

Our expertise is not traditional wood stairs, wood treads and wood railings, but uniquely designed and engineered metal stringers, incorporating suspended treads, glass railing and contemporary railing profiles for the latest in design and the best in stair value.

The spiral stair is a round stair with all treads attached to a center pole. In a area where space is tight and there is minimal square footage for a traditional stair, a spiral stair can function as a passageway from floor to floor in a beautiful and aesthetic way. These spiral stairs can be designed in a multitude of styles, from modern to classical, and everything in between.

An aspect that really sets our spiral stairs apart from the cookie-cutter spiral stairs is our solid, single-piece construction and our method of creating a stringer on the outside of the spiral stair treads. This exterior “ribbon” takes an ordinary spiral stair and transforms it into an extraordinary designer stair, both structurally and aesthetically.

A double helical stair functions very similarly to a spiral stair in that it is very efficient and can provide access from floor to floor in a limited space. The one distinct advantage a double helical stair has over a spiral is that it has a larger radius, and is much more comfortable for a person to traverse with a tray of drinks or food. From a craftsman perspective, the creation of a double helical stair is much more labor intensive due to the added inside and outside stringer, and trim and railing that need to be created.

Our onsite measure for any challenging project is completed with our 3-D Disto laser that provides us with precise dimensions and assists us in making complex layouts straight forward.



S-02

Double Helical stairs at DE Shore home.

DOUBLE HELICAL STAIRCASES

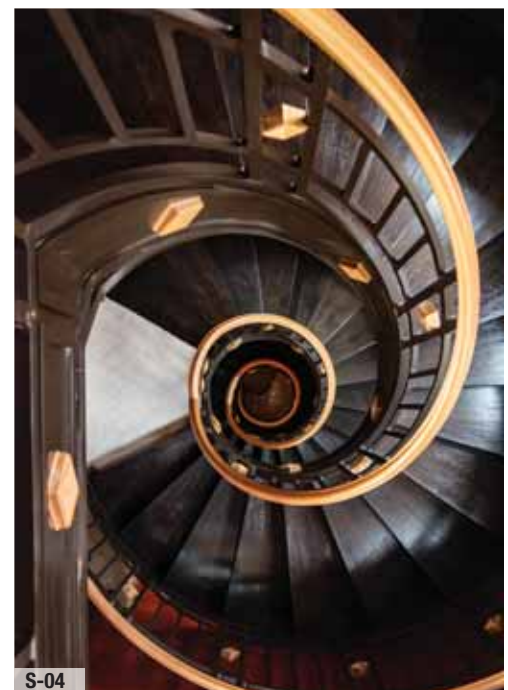


S-03

Double Helical stairs with Gold Highlights

Helical Stair Project

Our team has mastered many complex projects. For instance, we had a project where 3- 8ft diameter double helical stairs needed to be installed into a stair tower that was only accessible through 3 sets of double doors that were 6ft wide. We created a special dolly that supported the stairs in a way that allowed our team to wheel the staircases forward, while simultaneously corkscrewing the stairs through the doorway opening. These stairs were installed beautifully, with no onsite welding and minimal onsite disturbance.



S-04

Helical Top View

DOUBLE HELICAL STAIRCASES

 S-05, S-06, and S-07 are Shore Environment Approved



S-05

Double Helical stairs provides access from master suite to pool/spa.



S-06

Aluminum stair with IPE treads.



S-07

Top View of IPE treads.

DOUBLE HELICAL STAIRCASES

 S-08, S-09, and S-10 are Shore Environment Approved



S-08

Double Helical stairs provides access to 2nd floor bay front terrace.



S-09

Risers overlaid with Azek.



S-10

Close up of Mahogany caprail and stainless steel railing

DOUBLE HELICAL STAIRCASES



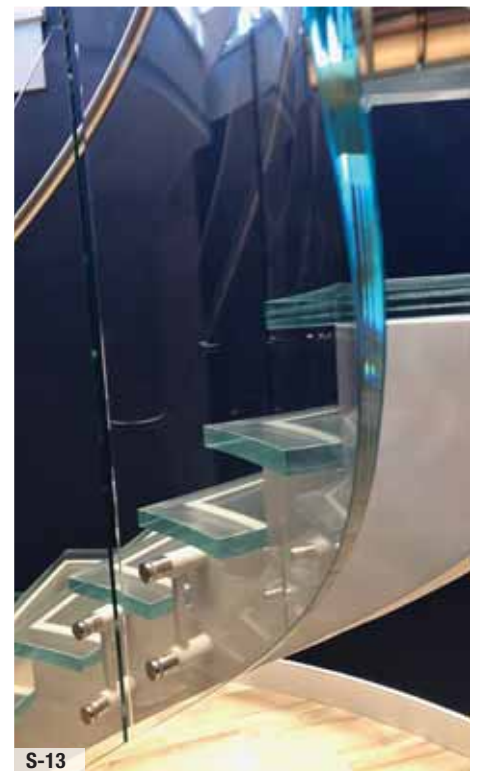
S-11

Double flights of curved glass stairs and glass railings



S-12

Translucent glass treads on curved stair



S-13

View of structural steel stair with glass treads

DOUBLE HELICAL STAIRCASES



S-14

Tight Radius Double Helical stairs



S-15

Open riser design that provides minimalistic aesthetic.



S-16

Teak treads against white aluminum frame.

DOUBLE HELICAL STAIRCASES



All Items on this spread are Shore Environment Approved



S-17

Double Helical stair that straightens out at the top.



S-18


Sleek black double helical stair with black metal risers.



S-19

Contrast of IPE treads, mahogany caprail, stainless railing, azek risers and black aluminum frame.

DOUBLE HELICAL STAIRCASES

 S-20, S-21, and S-22
are Shore Environment
Approved



S-20

White Double Helical stairs



S-21

Two sets of double helical stairs.



S-22

Top view of double helical stairs.

DOUBLE HELICAL STAIRCASES



Integrated lighting



Tower stair topview



Curved stairs inside an old silo to provide transport to upscale dining in a renovated barn.



S-26

Cathedral style stairs



S-27

Floating Cathedral stair underside.



S-28

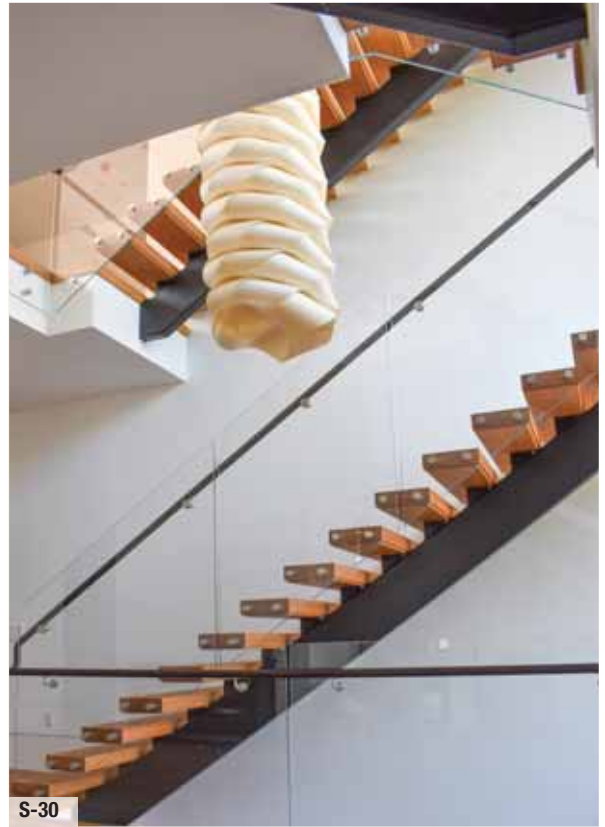
Floating Cathedral stair living area.

DESIGNER STAIRCASES



S-29

Black wood handrail up mono-stringer stair.



S-30

Side view of Mono-stringer stair.



S-31

Mono-stringer staircase with glass railing design.

DESIGNER STAIRCASES



S-32
White Oak Treads



S-33
Cathedral Stair support

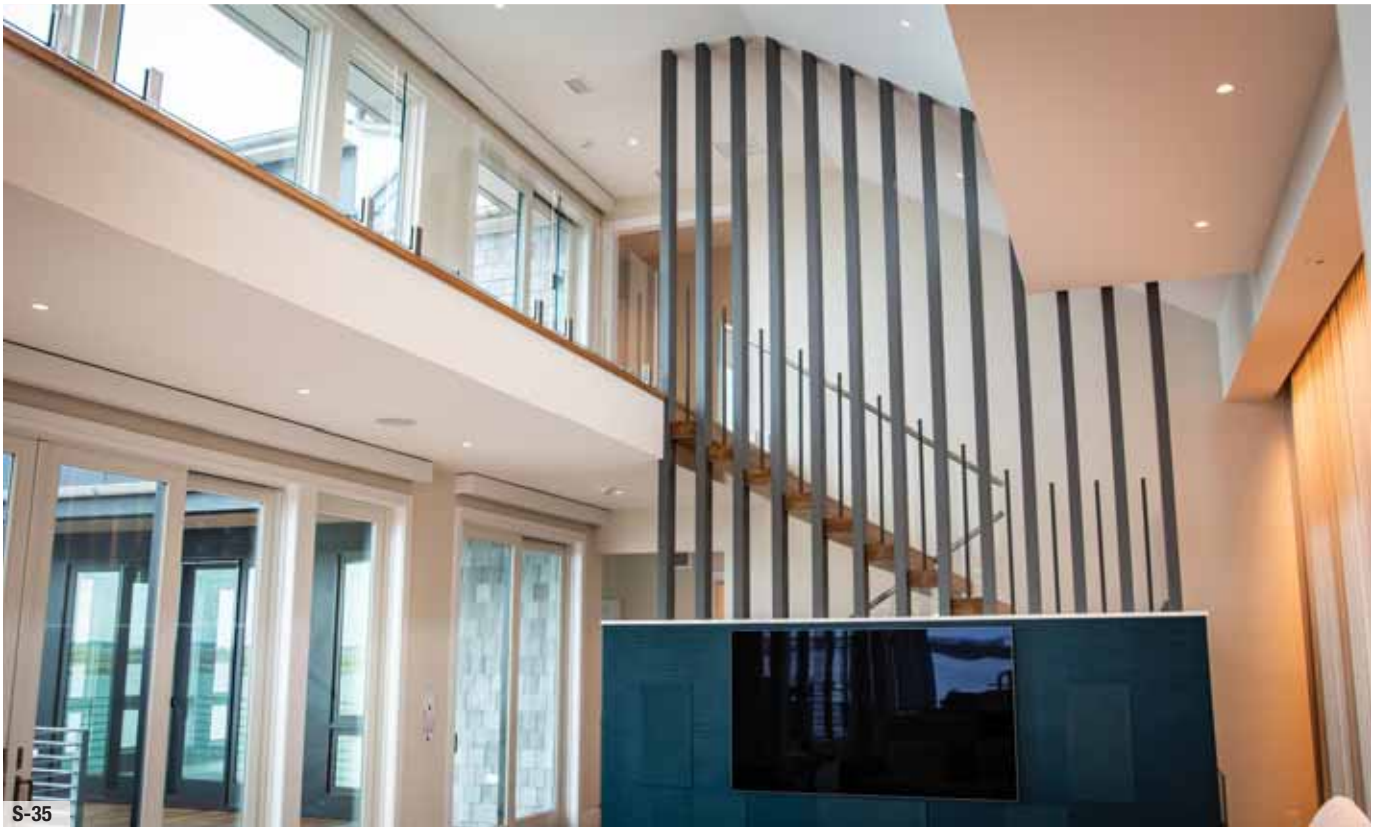


S-34
Stair structure is hidden in the wall and supported from the ceiling

DESIGNER STAIRCASES



All Items on this spread
are Shore Environment
Approved



S-35

Specially engineered louver wall to support cantilevered floating stairs.



S-36

“Invisible Rigidity” stairs



S-37

Louver wall detail

DESIGNER STAIRCASES



S-38

Double sawtooth stair stringers



S-39

Butcher block tread detail.



S-40

Modern stair with cable rail and a block wood caprail.

DESIGNER STAIRCASES



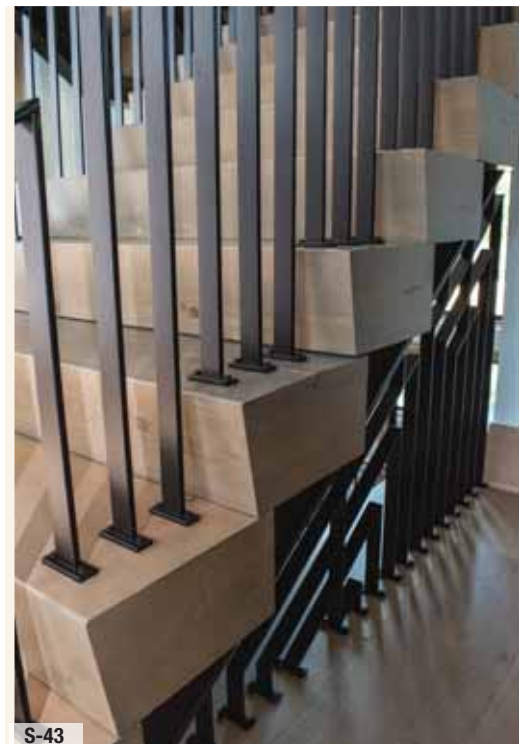
S-41

Eclectic Modern designed switchback stairs.



S-42

Modern railing with polished bronze caprail.



S-43

Rustic Douglas Fir block treads.

DESIGNER STAIRCASES



S-44

Double tube stringer up to view tower.



S-45

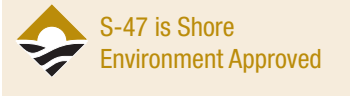
Double tube stringer structure detail.



S-46

Custom shaped butcher block treads.

DESIGNER STAIRCASES



S-47

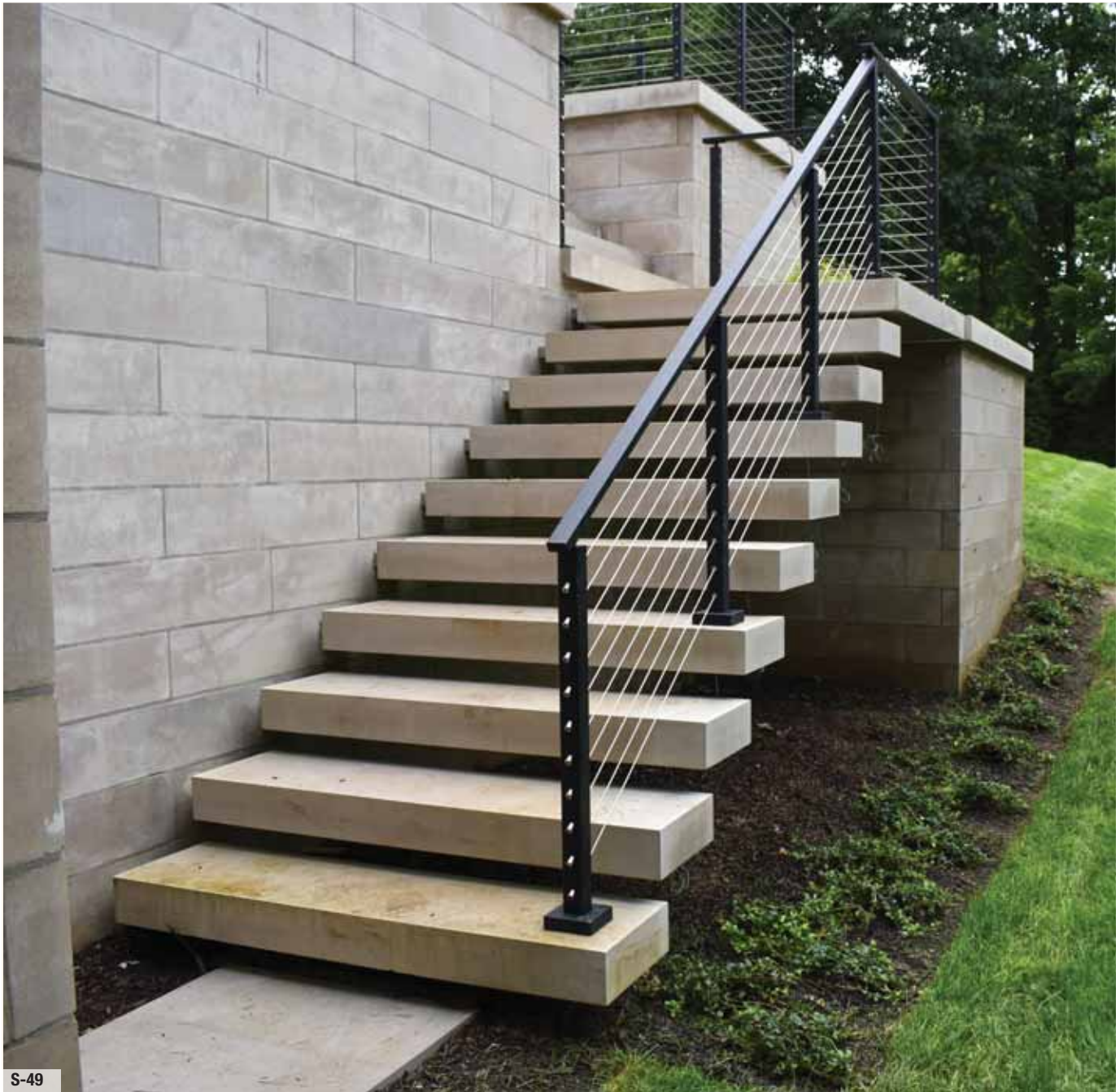
Floating stairs with masonry treads for a shore home



S-48

Concrete overlay.

DESIGNER STAIRCASES



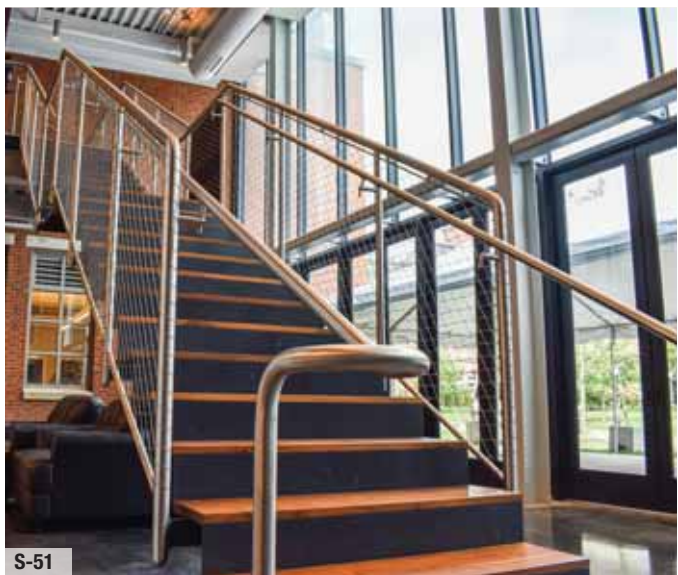
S-49

Cantilever stone tread stairs made of a stainless steel structure.



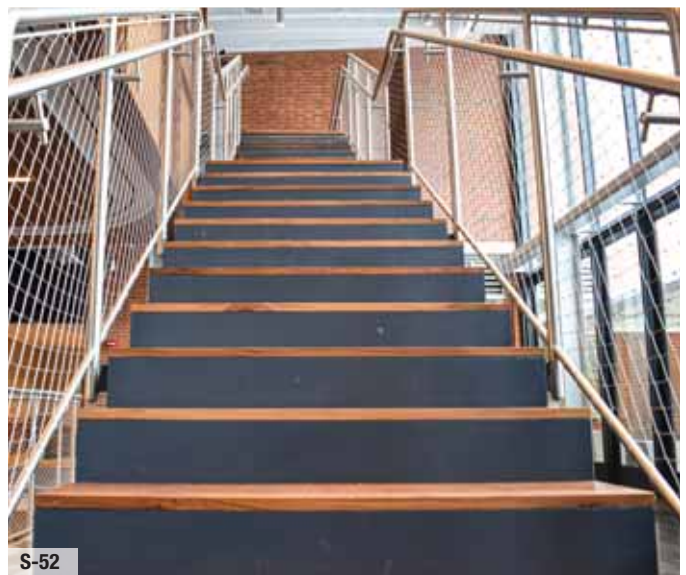
S-50

Commercial mono-stringer stair.



S-51

Stainless steel pipe handrail and railing frame.



S-52

Formed steel risers dressed with oak treads.

MONO-STRINGER STAIRCASES



The beauty of glass railing on a landing and switch back stairs



Stainless steel glass brackets



Stainless steel handrail detail.

MONO-STRINGER STAIRCASES



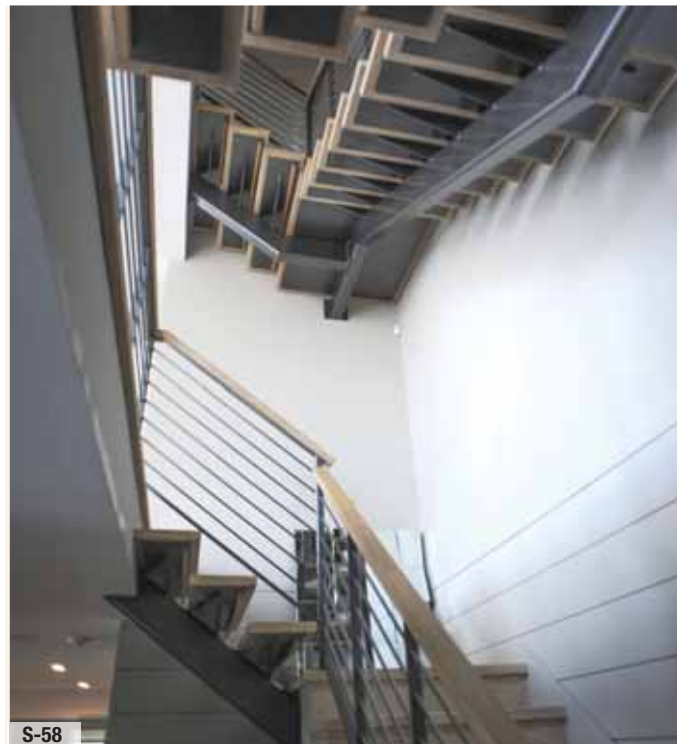
S-56

Multiple flights of contemporary stairs



S-57

Modern Railing on Wood Stair



S-58

Underside of the structural steel

MONO-STRINGER STAIRCASES



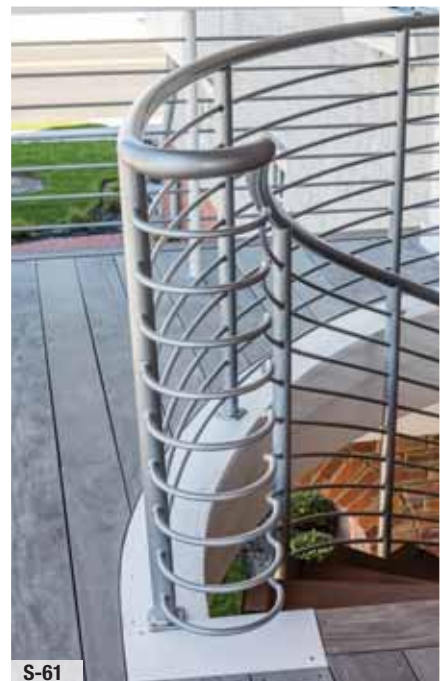
S-59

Two levels of modern floating stairs on a shore home



S-60


Second floor stair entryway.



S-61

Intricate bends and angles at the top of the mono-stinger stairs.

MONO-STRINGER STAIRCASES

 All Items on this spread, except S-62, are Shore Environment Approved



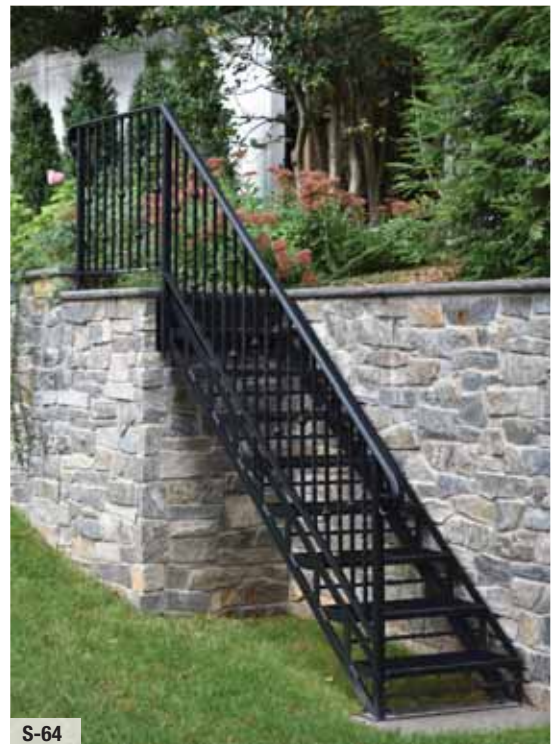
S-62

Brushed Stainless steel frame with marble tread overlay.



S-63

City staircase with clover tread design.



S-64

Stairs to garden area that allows water to pass through.



S-65

Beautiful spiral stair at the shore.



S-66

Custom laser cut wave treads.



S-67

Classical railing design with outer skirt structure.

SPIRAL STAIRCASES



All Items on this spread
are Shore Environment
Approved



S-68

Spiral stair provides access from pool terrace to the 2nd floor terrace.



S-69

Railing attached directly to the treads.



S-70

IPE treads detail.

SPIRAL STAIRCASES



Luxurious interior spiral staircase with blackened and waxed finish.



Custom forged knot and tassel.



Exposed picket design along the outside of the spiral ribbon.

SPIRAL STAIRCASES



S-74, S-75, and S-76
are Shore Environment
Approved



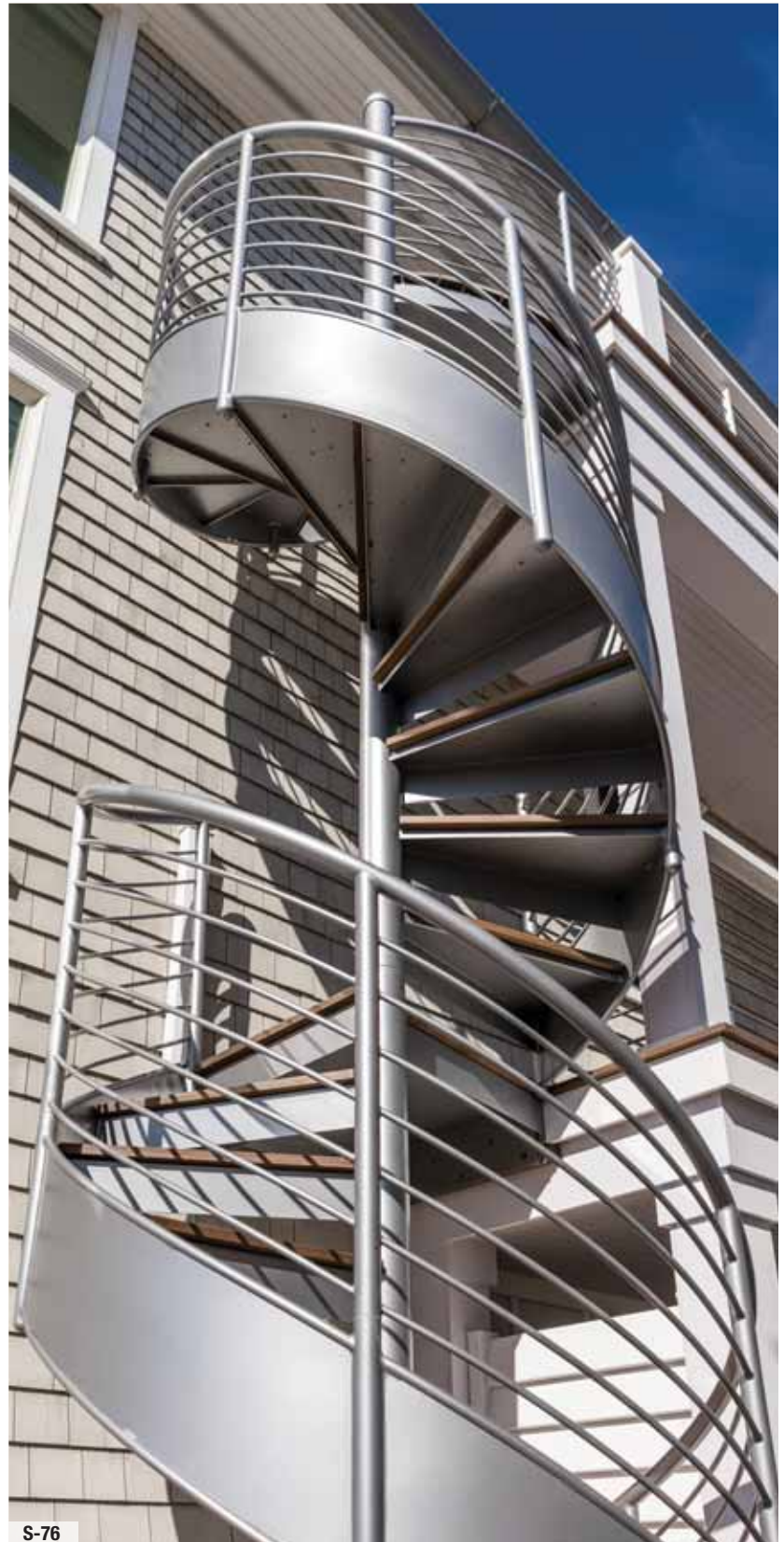
S-74

Powdercoated silver spiral staircase that overlooks the beach.



S-75

Ipe treads on stair to match balcony floor



S-76

Sleek spiral stair for access to match balcony railing

SPIRAL STAIRCASES



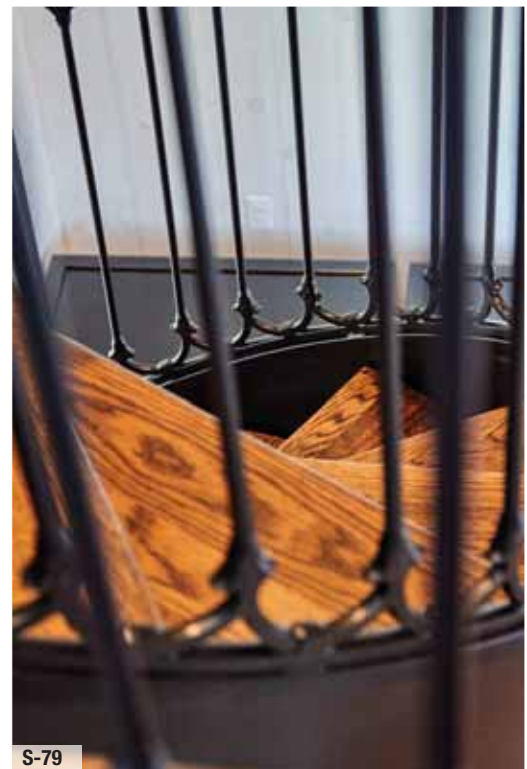
S-77

Man Cave Spiral staircase



S-78

Custom spiral staircase that leads to the man cave loft.



S-79

Authentic railing detail

SPIRAL STAIRCASES



S-81 and S-82 are
Shore Environment
Approved



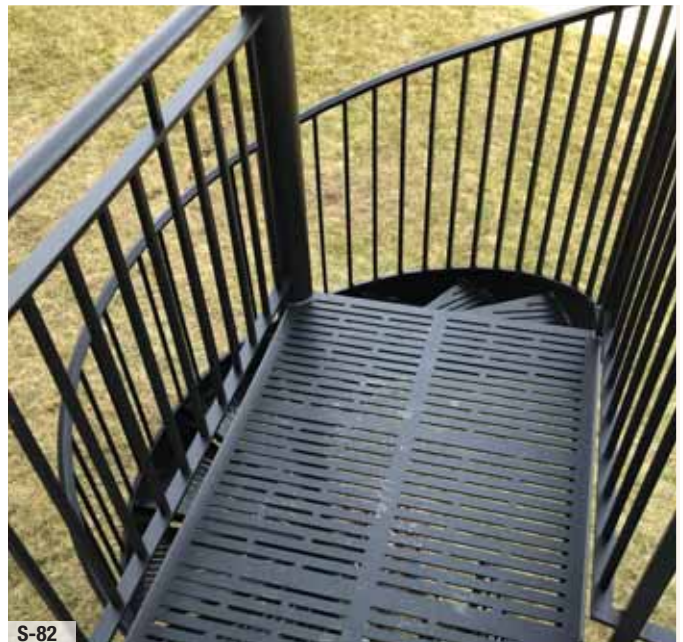
S-80

Interior spiral staircase provides beauty and accessibility for this multi-level private library



S-81

Terrace to poolside spiral staircase.



S-82

Custom laser floor design.



COMPASS
IRONWORKS

1406 WEST KINGS HIGHWAY

GAP, PA 17527

717-442-4500

WWW.COMPASSIRONWORKS.COM