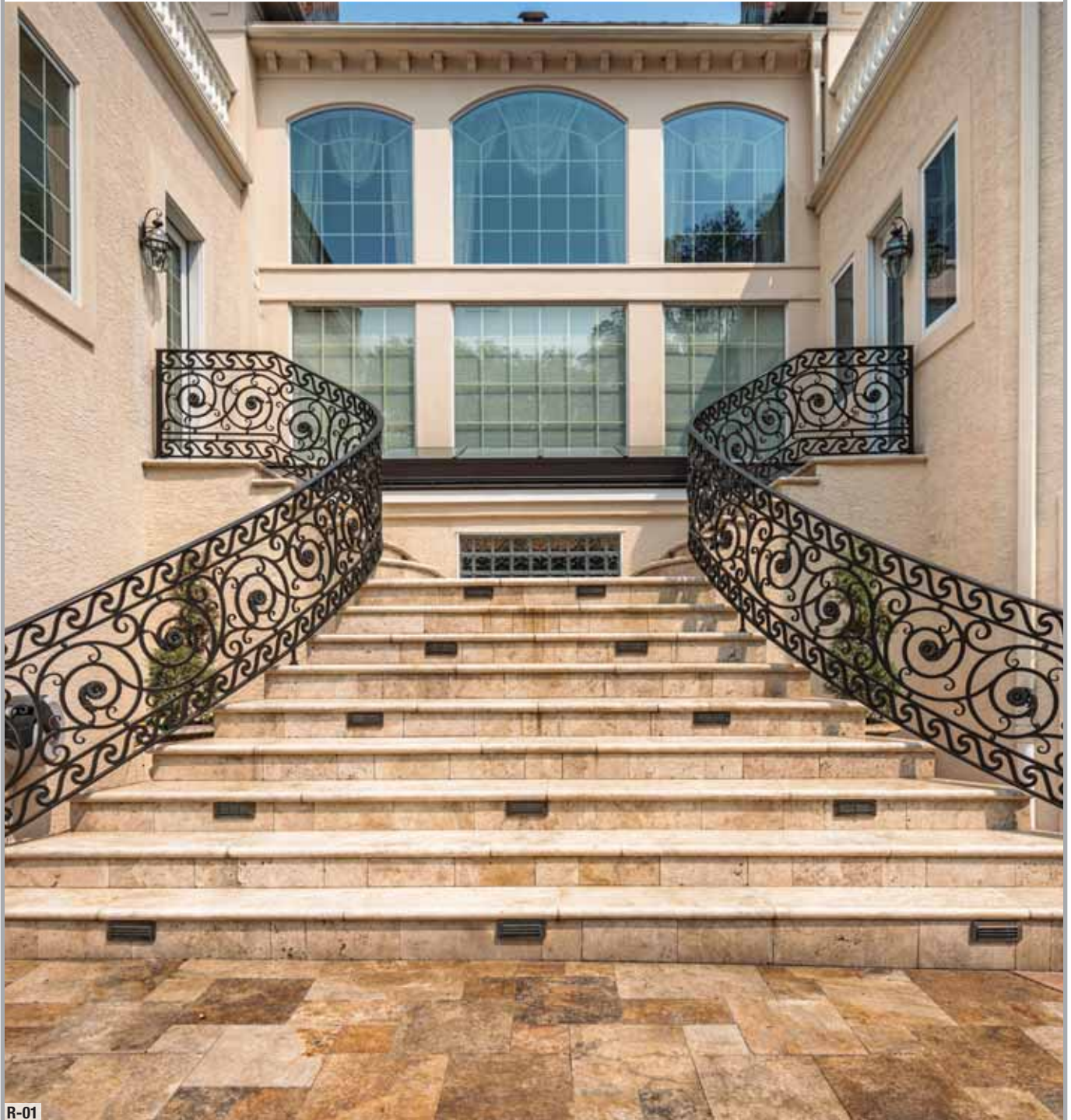




COMPASS
IRONWORKS



R-01

RAILINGS DESIGN GUIDE

VOLUME 4. ALL RIGHTS RESERVED, COMPASS IRONWORKS 2024



COMPASS IRONWORKS

Elegance and Integrity

At Compass Ironworks, we carry into the 21st century the Amish traditions that forged our artistic sensibilities: honesty, integrity, and dedication to family, community, and craft. We do no mass production here; every installation reflects your unique needs. We are master craftsmen who work with both traditional and 21st century tools. At the end of the day, we close the doors and leave our tools at the shop, not to be touched until the next workday begins.

For more information about Compass Ironworks, please contact us Monday through Friday at (717) 442-4500.



RAILINGS DESIGN GUIDE

WROUGHT IRON	4
RAILING OPTIONS.....	6
STANDARD HANDRAIL ENDINGS.....	7
INTERIOR POSTS.....	8
MAIN FOYER RAILINGS	10
INTERIOR RAILING PROJECTS.....	11
INTERIOR RAILING DESIGNS.....	37
EXTERIOR POSTS.....	41
EXTERIOR RAILING PROJECTS	43
EXTERIOR RAILING DESIGNS	87
BALCONIES	98
COMMERCIAL PROJECTS	106
SAMUEL YELLIN RESTORATIONS.....	110

When you see these icons on pages throughout the Design Guide, it indicates the following:



Enhanced Physical Perimeter Security



Shore Environment Approved

WROUGHT IRON



Over the centuries, wrought iron has been an important expressive material that reflects refined taste and character. The beauty of wrought iron is that despite its inherent rigidity and strength, it can be molded into graceful and elegant shapes. Iron possesses beauty that never dies; it is as charming today as it was a hundred years ago. And will remain so a century into the future.

The possibilities for expression in iron are unlimited. Iron can be turned and twisted into innumerable designs and textures to achieve the artist's and client's desired result. By working closely with designers, architects, and clients, unique expressions can be incorporated into the final design for the very essence of bespoke craftsmanship.

Using iron also makes a "green" statement. All the solid iron and aluminum bar stock we use is 97-100% post consumer recycled material. As stewards of our planet, we need to protect our earth's resources. By recycling old appliances, cars, and buildings, we repurpose existing materials into new and exciting ornamental iron products that will maintain their beauty and value for decades.

Enduring Finish

The integrity of the protective coating (or "finish") makes it possible to admire the work of past masters today. We treat our products with the most durable and resilient powder-coating so your iron masterpiece may be admired for ages to come.

The process starts with the materials. We use top-quality solid bars—not the thin wall hollow tubing pickets used for mass-produced fences. After the material is forged, welded, and fabricated to our client's specifications, the all-important finishing process begins...

First, the entire project is sandblasted to remove all mill scale, dirt, and residue. This step also performs another important function: physically opening up microscopic pores in the metal in preparation for the powder-coat. The next step is a hot phosphate bath followed by two clean water rinses. Next, we apply the actual finish, starting with a zinc-rich epoxy primer. Then, the entire project is heated, melting and partially curing the primer onto the metal surface. While things are still hot, the first top coat is applied followed by a second and final finish coat. This last coat is treated to a long, slow pass through a curing oven to bake the powder to a specified hardness.

The entire spraying process is more than 99% efficient, and all leftover spray is reclaimed and reused. Our facility exceeds EPA and DEP requirements.

WROUGHT IRON



Dedicated Craftsmen

Our master craftsmen are all natives of the Pennsylvania Dutch heritage found in Lancaster County, Pennsylvania—an area known internationally for its impeccable craftsmanship and superb work

ethic. Our craftsmen work as a team to design, measure, create, powder-coat, deliver, and install your project in an effort to make your entire Ironworks experience surpass your expectations.

We take pains to ensure that the overall design fits your taste and harmonizes with its surroundings. Another chief concern is meeting installation deadlines. As craftsmen of integrity, we do everything possible to make sure your promised installation is carried out on or ahead of schedule. Accurate measurements are taken onsite and, if needed, templates are made to ensure a perfect fit for the final installation.

Then, back at the shop we kick off the forging and fabricating. Detailed cleanup of the project requires scraping, grinding, sanding, and polishing to ensure visual cleanliness. The project is then pretreated and powder-coated right here in our facility for best quality control and ease of scheduling. For delivery, your iron is carefully wrapped for scuff-free transit to the site.

As we work, we keep in mind that our craftsmanship will be seen and evaluated for generations to come. We care about our clients' complete satisfaction. There is no excuse for anything less.



R-03

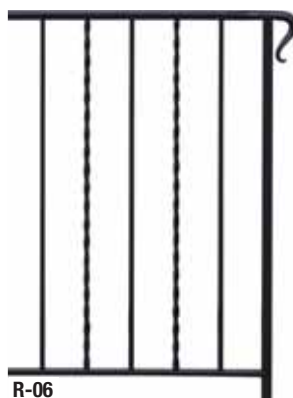
RAILING OPTIONS



Cheshire Belly (side view)



Fairweather



Gladwyne



Hampshire Straight



Hammered Basket



Huntingdon Belly
(side view)



Standard 3-Rail



Standard 4-rail



Tewksbury Straight



Tewksbury Belly
(side view)

STANDARD HANDRAIL ENDINGS



R-14

Volute



R-15

Small Lambs Tongue



R-16

Square End



R-17

Large Lambs Tongue

INTERIOR POSTS



R-18

Hilton Style Volute in 1/2" Round Bar



R-19

Ornate Foot Bracket



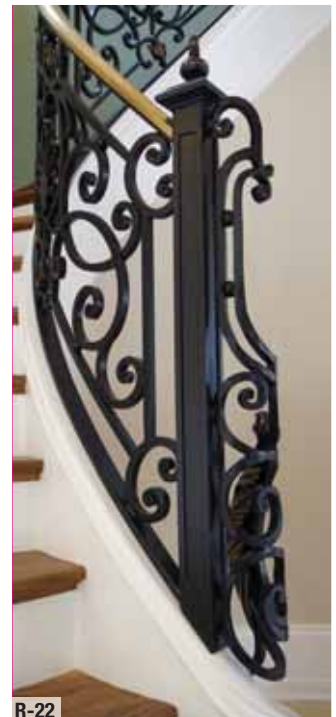
R-20

Hilton Style Volute in 5/8" Square Bar



R-21

Textured Box Post



R-22

Ecklin Int Post

INTERIOR POSTS



R-23
Knightson Post



R-24
Iron Panel and
Knightson Post



R-25
Scroll Flare Post



R-26
Modern Round Post



R-27
Acanthus Termination



R-28
Brigalias Post



R-29
Brigalias Volute



R-30
Custom Turned Bronze
Newel

MAIN FOYER RAILINGS

An exquisite iron railing in a main foyer setting makes a statement of bespoke taste. Iron has the rigidity and composition to withstand decades—even centuries—of use and still possess grace and elegance when admired generations later.

There are many exquisite and famous homes, such as The Breakers and The Nemours mansion, that wonderfully showcase the dramatic effect of a fine iron railing. The end result takes an ordinary space and transforms it into a masterpiece.

Today's architects, designers, and homeowners have more choices than ever before. While there are wooden and iron pickets that you can "stick and glue" for a cookie-cutter railing, the same space can be dramatized by incorporating a custom-forged piece of iron art—a piece of beauty to cherish forever.

But a word of caution... ironwork can be overdone. Well-designed railings are subtle, eye-pleasing structures that harmonize completely with their setting and surroundings. The result is an expression of your own design and taste that transcends time and will be admired for generations.



R-31

Exquisitely expressive hand-forged interior railing



R-32

Old European style railing



R-33

Cast bronze acanthus design element.



R-34

Iron scroll functioning as a flared volute.

INTERIOR RAILING PROJECTS



R-35

Custom forged iron railings



R-36

Scroll and leaf detail



R-37

Top view

INTERIOR RAILING PROJECTS



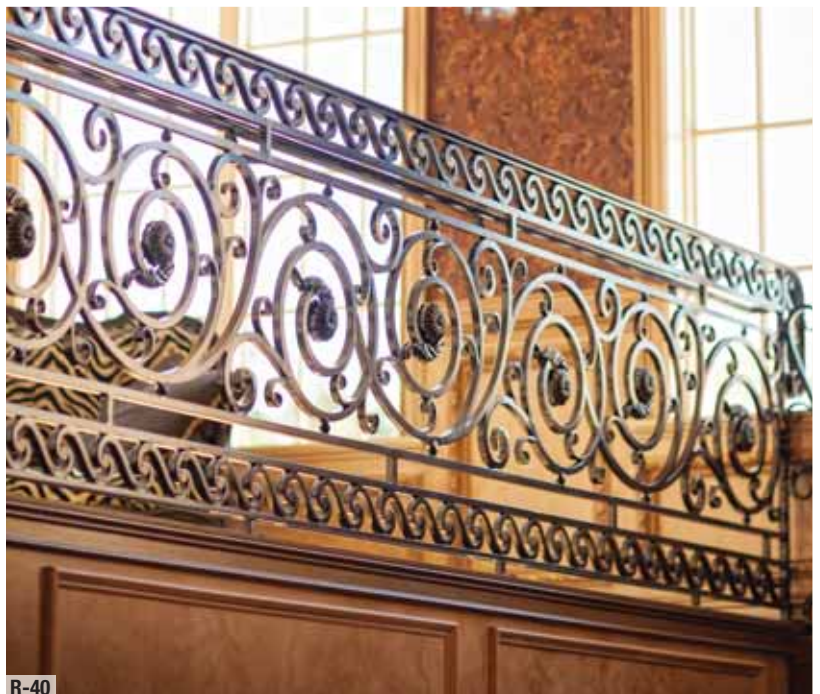
R-38

Beautiful railing at high-end wedding venue.



R-39

A gold highlight was added to the forged flower and acanthus leaves



R-40

Forged railing along the balcony overlook.

INTERIOR RAILING PROJECTS



R-41

Ironwork perfectly suits the décor for these homeowners with a love of antiques and fine craftsmanship.



R-42

Intricate scroll railing design detail



R-43

Bronze volutes create timeless appeal.

INTERIOR RAILING PROJECTS



R-44

Custom forged iron volute for stair handrail with antique tarnish



R-45

Blackened finish iron scroll railing.



R-46

Overview of interior iron railing

INTERIOR RAILING PROJECTS



R-47

Hand-forged iron railing creates a statement that will transcend time



R-48

Custom forged volute design



R-49

Forged center piece detail

INTERIOR RAILING PROJECTS



R-50

Hand-forged designs in 1/2" rail create a subtle statement



R-51

Forged panels add elegance to the foyer



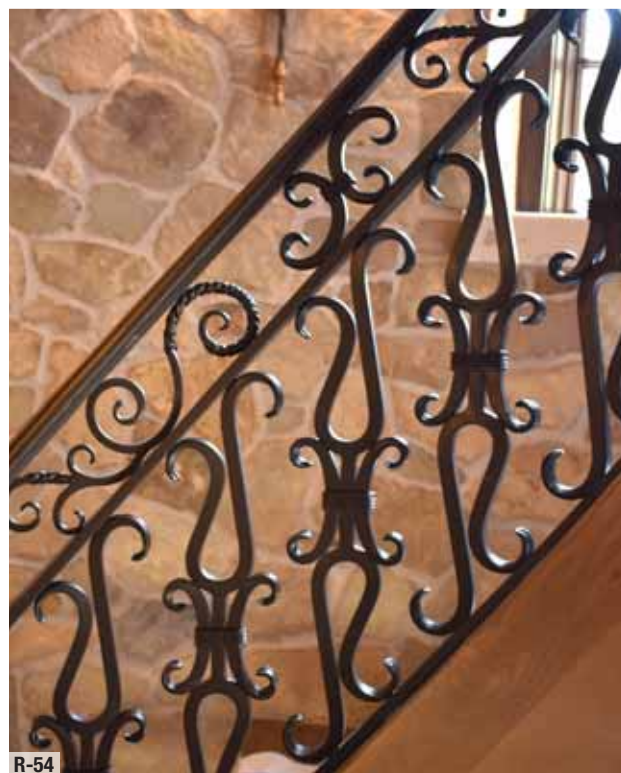
R-52

Detail of hand-forged quad scrolls with gold highlight

INTERIOR RAILING PROJECTS



Turret stair railing that leads to the balcony overlook.



Radial stair silhouette hand crafted



Samuel Yellin inspired scrollwork

INTERIOR RAILING PROJECTS



Old European style railing



Cast iron lion design element.



Iron scroll functioning as a flared volute.

INTERIOR RAILING PROJECTS



R-59

Beautiful collaboration of metal, wood, and marble



R-60

Custom forged crest accentuates beautiful forged railing



R-61

Scroll and gold leaf detail

INTERIOR RAILING PROJECTS



R-62

Grand Staircase railing in Moorestown, NJ



R-63

Iron railing for kitchen stairs



R-64

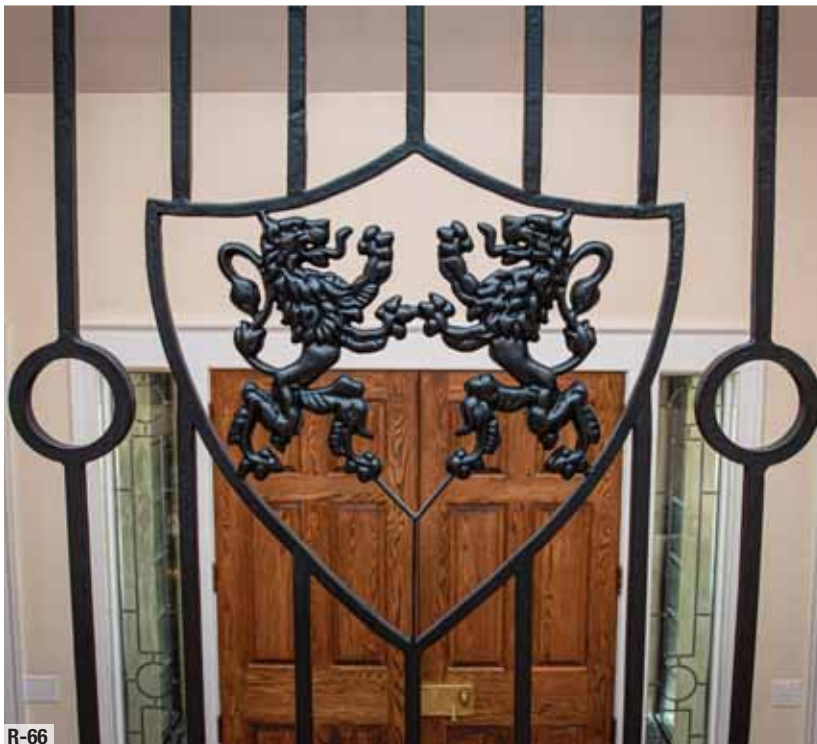
Note the luxurious effect of gold highlight on the edge

INTERIOR RAILING PROJECTS



R-65

Old world design for an overlook in a grand foyer.



R-66

Double lion design crest



R-67

Custom forged Samuel Yellin post

INTERIOR RAILING PROJECTS



R-68

Over easing bronze caprail detail



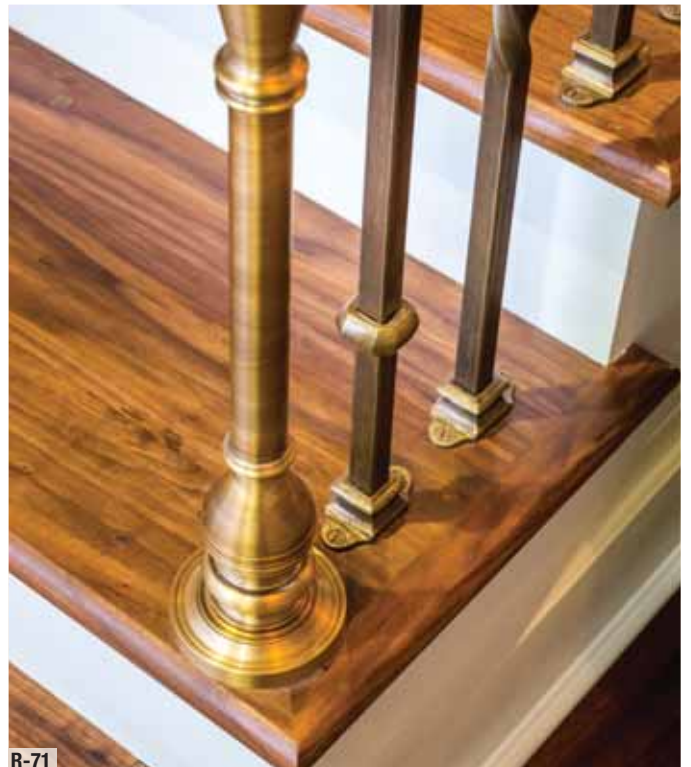
R-69

A new custom iron railing perfectly matches 1934 work



R-70

Bronze handrail and newel with iron twisted pickets make for an exquisite railing.



R-71

Custom machined bronze newel post.

INTERIOR RAILING PROJECTS



R-72

Powder-coated black iron stair railing



R-73

Forged center piece detail



R-74

Forged volute for wrought iron railing

INTERIOR RAILING PROJECTS



R-75

Detail of intricate scroll and collar design



R-76

Post detail



R-77

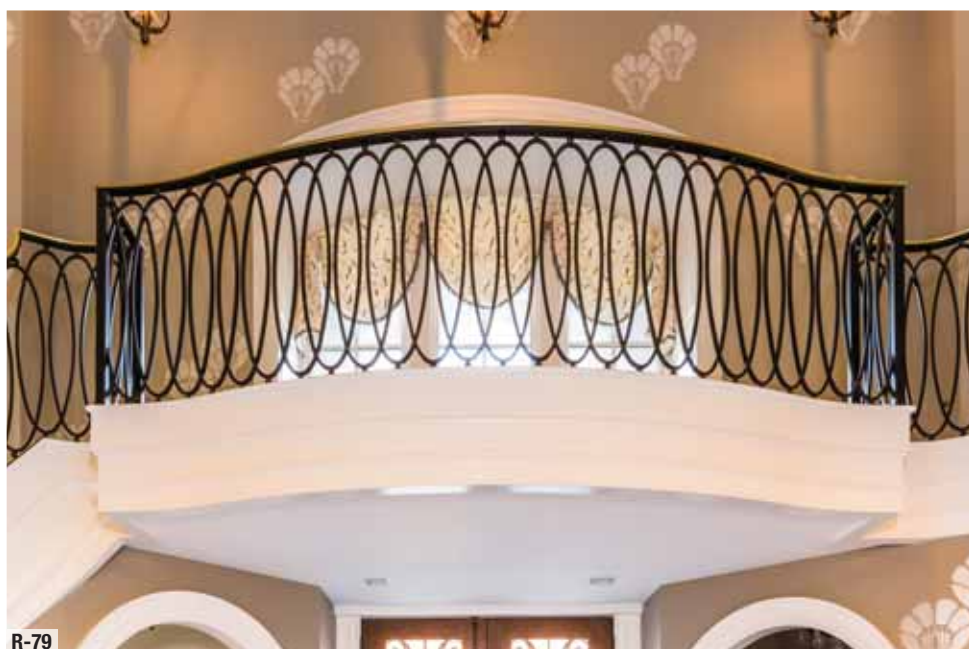
Forged scroll railing design with gold highlights and a bronze caprail.

INTERIOR RAILING PROJECTS



R-78

The complex challenges of multiple radices and angles create a phenomenal visual when executed correctly



R-79

Transitional stair railing design with bronze caprail



R-80

Oval design meets all codes but adds insightful yet subtle design flair.

INTERIOR RAILING PROJECTS



R-81

Simple, classic and forged stair case railing



R-82

Scroll detail



R-83

Basketball engraving detail

INTERIOR RAILING PROJECTS



R-84

Eclectic modern design pattern



R-85

Grand foyer railing design with modern bronze caprail.



R-86

Curved railing at bottom of grand foyer.

INTERIOR RAILING PROJECTS



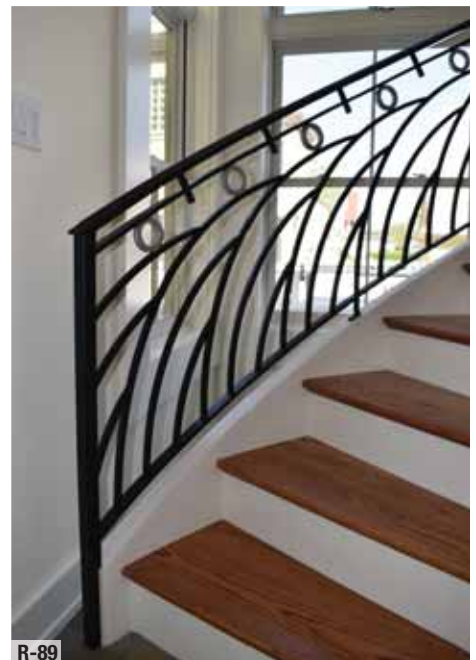
R-87

Two flights of curved modern wave railing design.



R-88

Wave railing detail



R-89

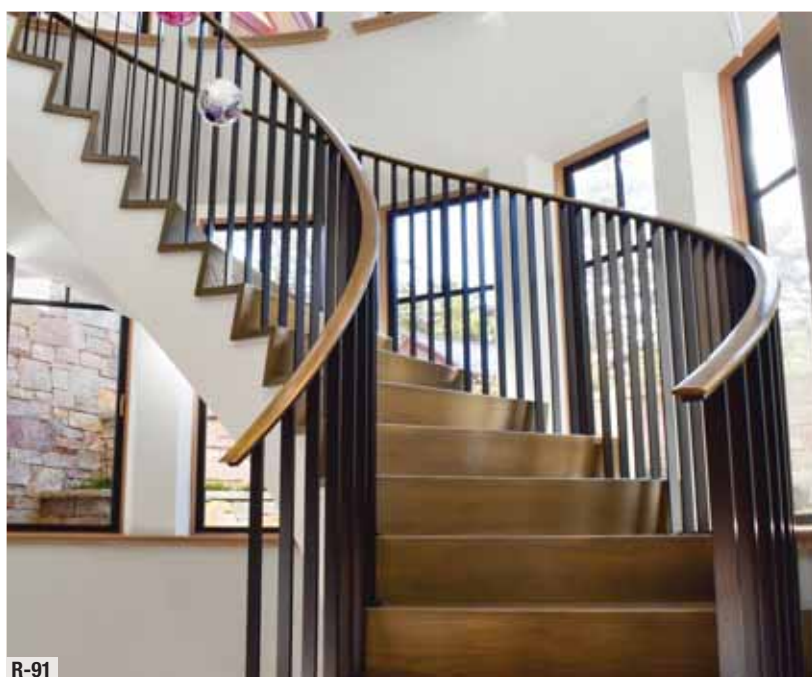
Modern wave railing provides a cascading effect up the staircase.

INTERIOR RAILING PROJECTS



R-90

Top view of beautiful modern railing curves.



R-91

Smooth modern railing curvature.



R-92

Curved modern bronze caprail

INTERIOR RAILING PROJECTS



R-93
Modern Railing design



R-94
Bronze handrail detail



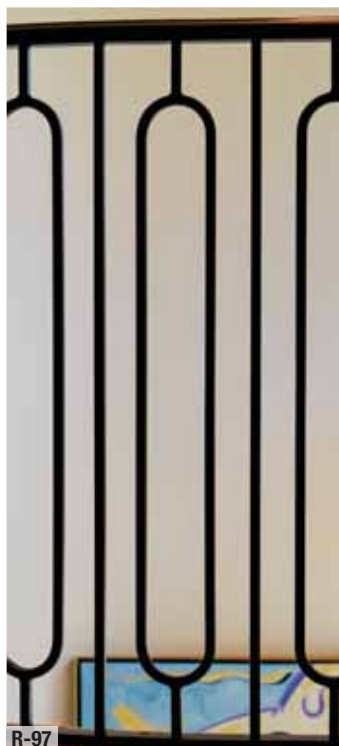
R-95
This modern railing design provides safety and code compliance on every aspect.

INTERIOR RAILING PROJECTS



R-96

Modern oval railing design



R-97

Oval design detail



R-98

Multiple levels of oval railing design.

INTERIOR RAILING PROJECTS



R-99

Contemporary iron railing with wood caprail, photo courtesy of Toby Kahn Interiors



R-100

Depth detail of contemporary iron interior railing, photo courtesy of Toby Kahn Interiors



R-101

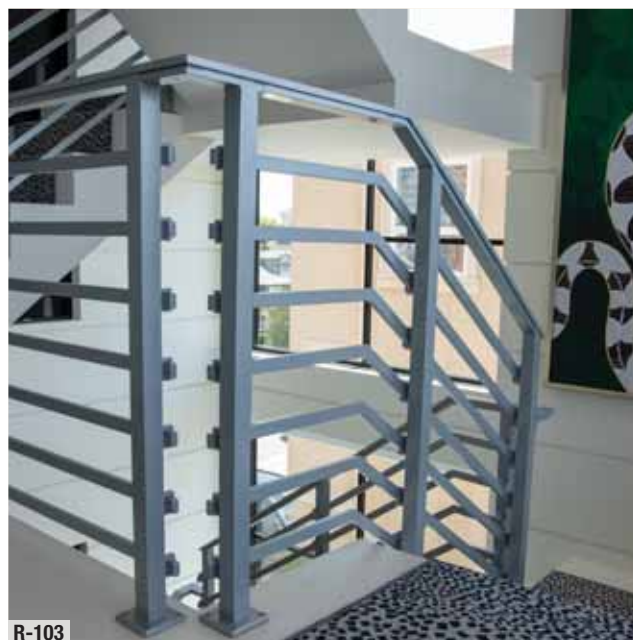
Dimensional railing contemporary design, photo courtesy of Toby Kahn Interiors

INTERIOR RAILING PROJECTS



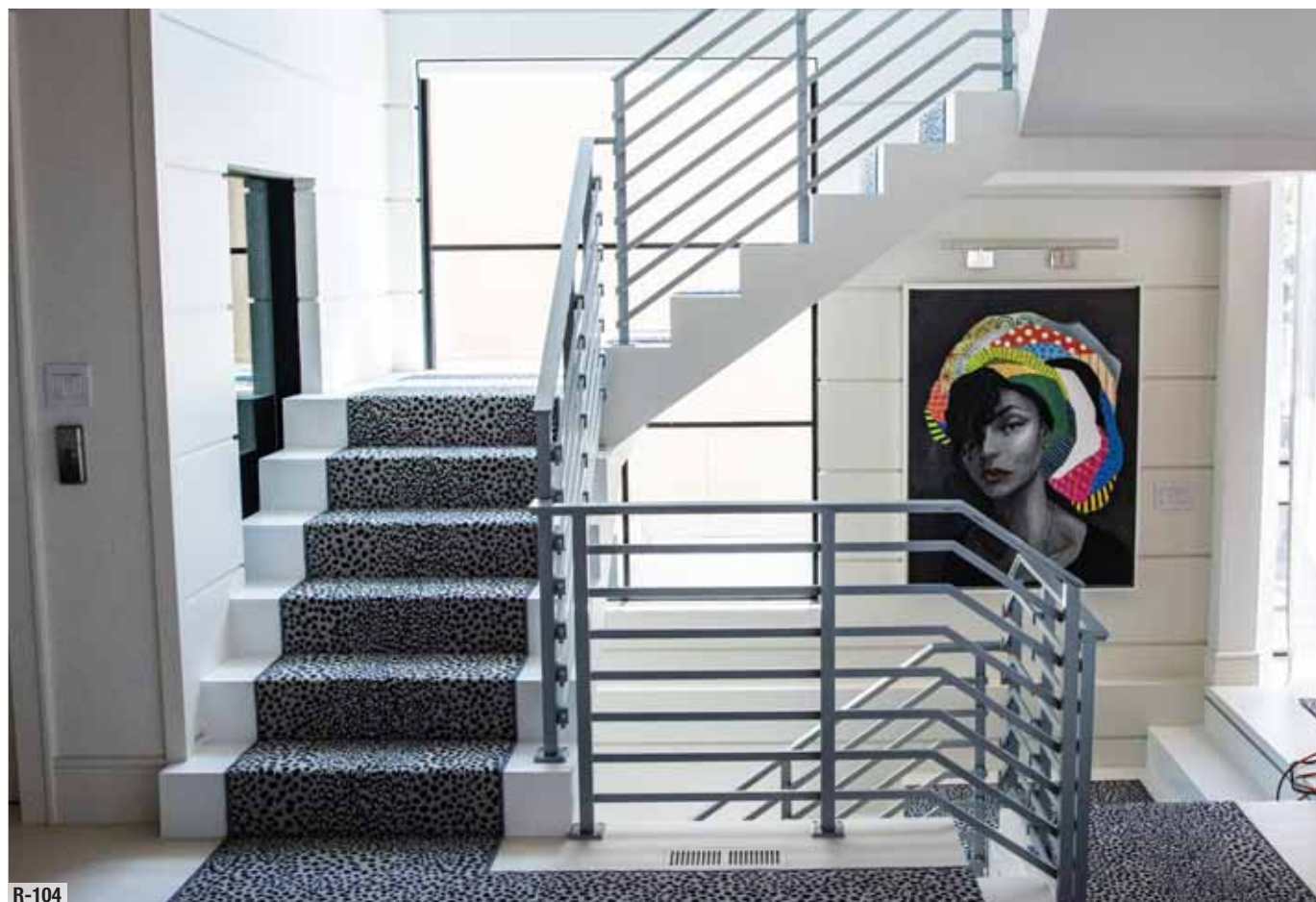
R-102

Modern railing clasp design



R-103

Modern railing with a double post detail.



R-104

Multi-level modern stair railing

INTERIOR RAILING PROJECTS



All Items on this spread are
Shore Environment Approved



R-105

Multi-level modern stair railing



R-106

Yacht railing design



R-107

Interior railing with side-mount added detail.

INTERIOR RAILING PROJECTS



R-108

Stainless steel design in a #4 finish.



R-109

The contrast of flat bar and round bar in stainless for a contemporary look



R-110

Modern stainless railing for staircase



INTERIOR RAILING DESIGNS



R-111

Glass railing with talon feet install.



R-112

Bracket mounted railing



R-113

Custom interior iron railing in Mount Laurel, NJ

INTERIOR RAILING DESIGNS



R-114

Modern design railing with a bronze caprail.



R-115

Interconnected dome picket railing.



R-116

Level rail with side-mounted balusters.

INTERIOR RAILING DESIGNS



Bronze handrails add authentic safety to a refurbished 1934 pool house.



Contemporary iron railing in Ventnor, NJ



Ascending volute railing with a bronze center post.

INTERIOR RAILING DESIGNS



R-120

Transitional design utilizing the contrast of iron and wood



R-121

Beautiful staircase with wood cap-rail and iron railing



R-122

1930's railing replication

EXTERIOR POSTS



R-123

Larchmont



R-124

Scarsdale



R-125

Tribeca



R-126

Acanthus Post



R-127

Hampton

EXTERIOR POSTS



R-128

Old Westbury



R-129

Lloyd Harbor



R-130

Oyster Bay



R-131

Manchester belly railing on three balconies and a large terrace.



R-132

Manchester Belly railing view of the ocean



R-133

Forged Manchester railing balcony.

EXTERIOR RAILING PROJECTS



R-134, R-135, and R-136 are
Shore Environment Approved



R-134

Forged lateral volute for staircase railing



R-135

Detail of forged rosette and leaf for stair railing



R-136

The panorama of beautiful sweeping forged aluminum railings

EXTERIOR RAILING PROJECTS



Terrace railings overlooking Bucks County countryside



Iron filigree to enhance an entryway



Iron railing with forged iron frieze

EXTERIOR RAILING PROJECTS



Forged Iron railing scroll panel



Forged knuckles



Forged Iron terrace railing in graphite color

EXTERIOR RAILING PROJECTS



R-143

Forged aluminum scroll railing.



R-144

Post cap detail



R-145

Forged scrollwork and post detail

EXTERIOR RAILING PROJECTS



R-146
Marine grade post that withstands the saltwater environment.



R-147
Hand-forged aluminum railing on a bay front property



R-148
Marine grade aluminum railing for a pool on a water front property

EXTERIOR RAILING PROJECTS



All Items on this spread are
Shore Environment Approved



R-149

Hampshire Belly railing in Lebanon, PA



R-150

Hampshire Belly detail



R-151

Iron Hampshire Belly railing between the stone columns

EXTERIOR RAILING PROJECTS



R-152, R-153, and R-154 are
Shore Environment Approved



R-152

Three stories of solid aluminum Hammered Basket railings



R-153

Hammered Basket railing creates safety and adds classic appeal without obstructing ocean views



R-154

Basket design in diamond pattern.

EXTERIOR RAILING PROJECTS



R-155

Forged rosettes enhancing this terrace railing.



R-156

Belly railing adds a dimensional aesthetic to client's rear terrace.



R-157

Terrace step railings in Moorestown, NJ

EXTERIOR RAILING PROJECTS



R-158

Rustic scroll railings along the front porch.



R-159

Side Entry Railings



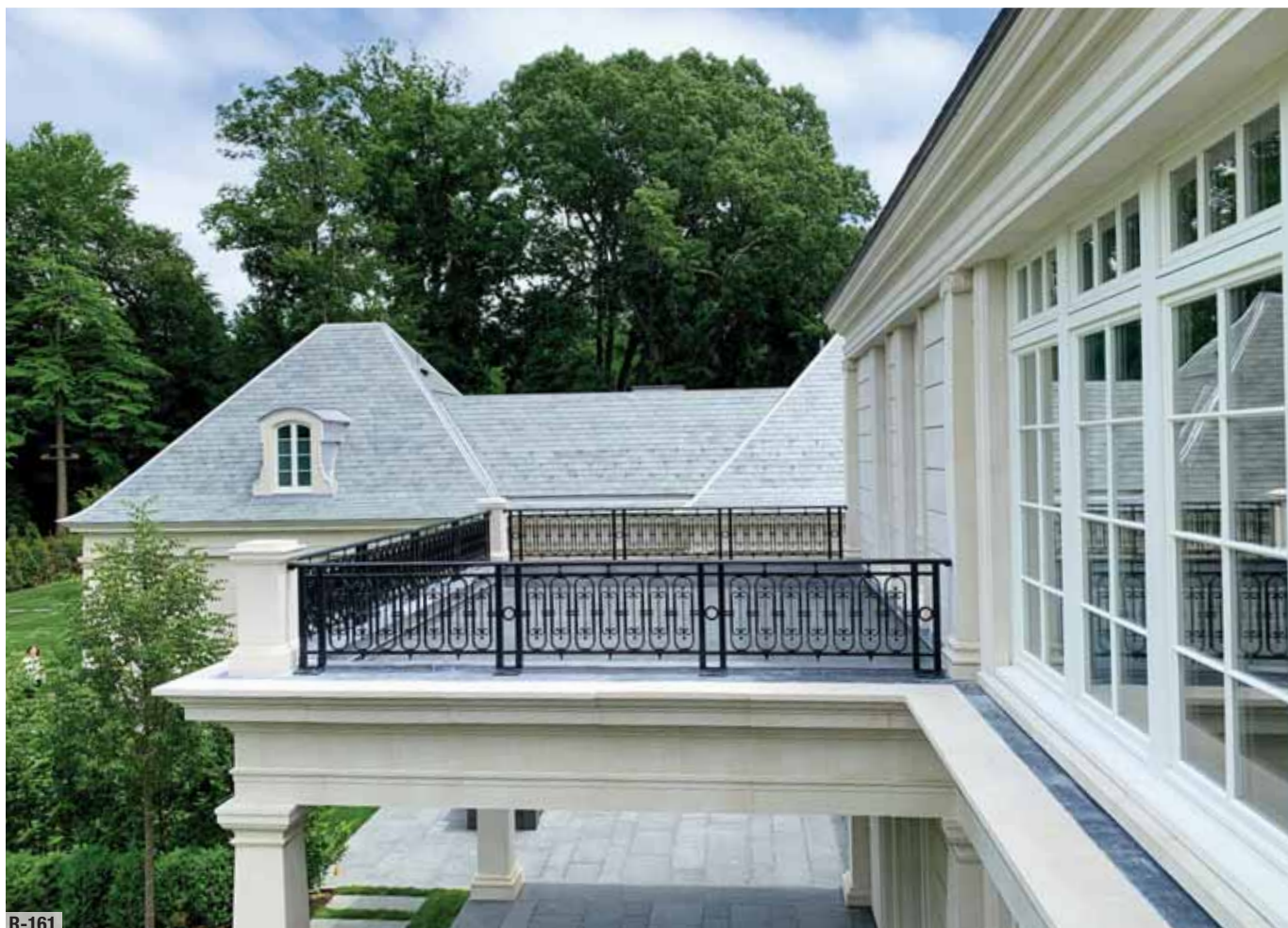
R-160

Forged Iron scrolls on that top and bottom of every picket.

EXTERIOR RAILING PROJECTS



R-161, R-162, and R-163 are
Shore Environment Approved



R-161

Architect's balcony railing design of a French aesthetic.



R-162

Exquisite scrollwork and modern oval design elements.



R-163

French balcony design

EXTERIOR RAILING PROJECTS



R-164

Victorian shore home is enhanced with these exceptionally ornate railings



R-165

Marine grade railing offer beauty for this family's shore retreat



R-166

Ornate railings with forged aluminum lamb's tongue end.

EXTERIOR RAILING PROJECTS



All Items on this spread are
Shore Environment Approved



R-167

Inside exquisite volute design.



R-168

Outside exquisite volute design.



R-169

Marine grade castings specifically for the grand shore home.

EXTERIOR RAILING PROJECTS



R-170

Beautiful terrace railing with intricate scrollwork



R-171

Collar and scroll details in custom aluminum railing.



R-172

Terrace entry with exquisite lamb's tongue design.

EXTERIOR RAILING PROJECTS



All Items on this spread are
Shore Environment Approved



R-173

Forged aluminum railing



R-174

Exquisite rose detail.



R-175

Scrolls and twisted pickets provide an awesome entrance to this stately home.

EXTERIOR RAILING PROJECTS



R-176

Curved entry railings



R-177

Quad-scroll and collar design



R-178

Heavy ornate balcony railing



R-179

Terrace railing overlooking the bay

EXTERIOR RAILING PROJECTS



All Items on this spread are
Shore Environment Approved



R-180

Hampshire Belly railing



R-181

Hampshire Belly railing along radiused front terraces.



R-182

Terrace railings in Longport, NJ

EXTERIOR RAILING PROJECTS



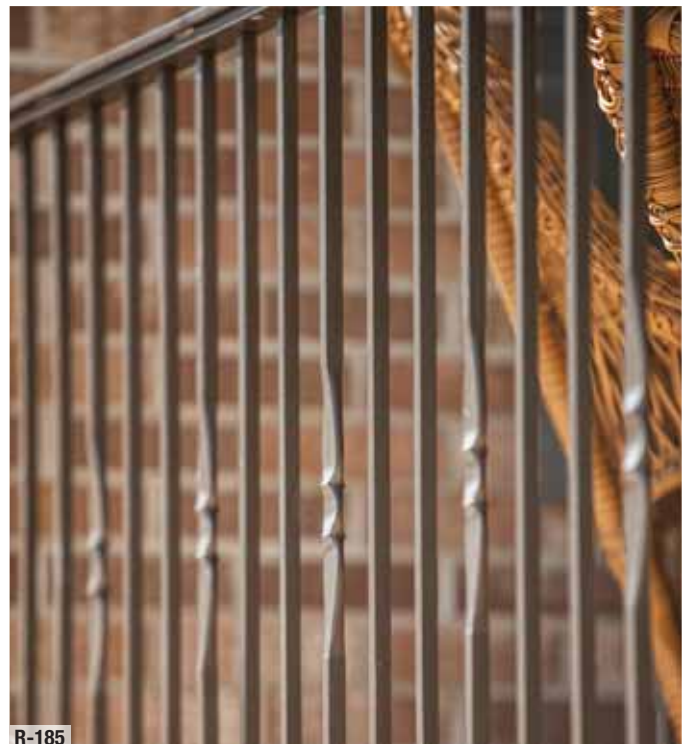
R-183

Roanoke railing is a solid match for this brick home



R-184

Petite lamb's tongue with extra extension for an extra flare of design.



R-185

Roanoke railing design with a forged spoon detail.

EXTERIOR RAILING PROJECTS



R-186

Close up of Iron railing that has an antique iron paint process to look like it was built decades ago



R-187

Textured flat bar handrail with a classical volute ending.



R-188

Wrought iron railing specially created with today's materials for an authentic look

EXTERIOR RAILING PROJECTS



R-189, R-190, and R-191 are
Shore Environment Approved



R-189

Hampshire straight picket terrace railing



R-190

Hampshire Straight picket stair railing



R-191

Large lambs tongue in a medium bronze powder coat

EXTERIOR RAILING PROJECTS



R-192

Antique replication iron railing.



R-193

Ascending volute in Iron



R-194

Brass ball finial

EXTERIOR RAILING PROJECTS



R-195, R-196, and R-197 are
Shore Environment Approved



R-195

Volute detail photo with contrast masonry



R-196

Custom aluminum fence along wall.



R-197

Custom aluminum railing on upper terrace.

EXTERIOR RAILING PROJECTS



R-198

Mainline railing with a collar diamond pattern.



R-199

Textured pickets



R-200

Pool side Mainline railing with rings and knuckles

EXTERIOR RAILING PROJECTS



R-201

Exterior balcony railing forged from aircraft grade aluminum, indistinguishable from wrought iron



R-202

Close up of wrought iron railing design



R-203

Ornamental railings on a bay front home

EXTERIOR RAILING PROJECTS



All Items on this spread are
Shore Environment Approved



R-204

Two Levels of custom aluminum belly railings



R-205

Custom aluminum railing withstood Hurricane Sandy



R-206

Railing to post connection

EXTERIOR RAILING PROJECTS



R-207

Custom "Bouquet" railing in Princeton, NJ



R-208

"Bouquet" railing detail



R-209

Custom "flower" petals

EXTERIOR RAILING PROJECTS



R-210

Custom bronze medallion



R-211

Forged aluminum railing detail.



R-212

Grand entry with forged aluminum railings.

EXTERIOR RAILING PROJECTS



R-213

Luxury apartment railings, Manhattan NYC



R-214

Custom railings that enhance the high-rise architecture.



R-215

Custom star detail

EXTERIOR RAILING PROJECTS



All Items on this spread are
Shore Environment Approved



R-216

This sublime pool space is transformed by the spectacular railing design.



R-217

Terrace railing overlooking the pool.



R-218

Custom forged railing accentuates steps

EXTERIOR RAILING PROJECTS



Flared entry railings



Scrolls managed around multiple angles



Forged aluminum scrolls coupled with marine grade knuckle details.

EXTERIOR RAILING PROJECTS



All Items on this spread are
Shore Environment Approved



R-222

Custom terrace railing for triathlete lover



R-223

Swimming



R-224

Running



R-225

Biking

EXTERIOR RAILING PROJECTS



R-226

Metal railings for stairs in modern aluminum



R-227

Beautifully radiused railing



R-228

Both sides of entry railing provide symmetry for front stairs

EXTERIOR RAILING PROJECTS



All Items on this spread are
Shore Environment Approved



R-229

Grand stair railings in the VA mountains



R-230

Large aluminum architectural post.



R-231

Custom aluminum railing curves gracefully into architectural post.

EXTERIOR RAILING PROJECTS



R-232

Modern Terrace railing design with bronze caprail



R-233

Bronze caprail and powder coated aluminum railing enhances this modern home.



R-234

Modern Design exterior railing

EXTERIOR RAILING PROJECTS



R-235, R-236, and R-237 are
Shore Environment Approved



R-235

French Balcony and terraces are enhanced with custom aluminum railings.



R-236

Posts and custom railings provide safety and beauty



R-237

Ring detail along 3-rail design.

EXTERIOR RAILING PROJECTS



R-238

Beautiful three rail ring design



R-239

Beautiful railing design



R-240

Beautiful Side entry railings

EXTERIOR RAILING PROJECTS

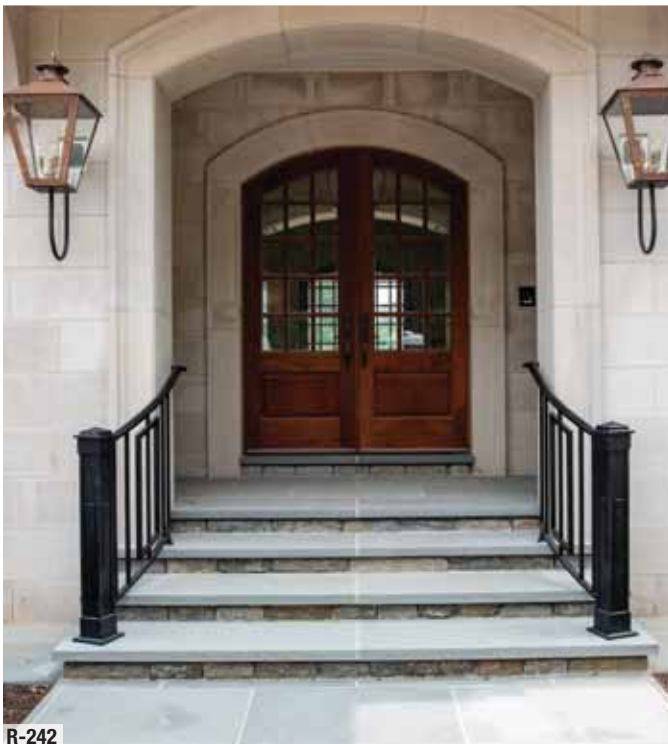


All Items on this spread are
Shore Environment Approved



R-241

Curved railing for a grand entry.



R-242

Side entry Curved Railings



R-243

Rectilinear railing Design.

EXTERIOR RAILING PROJECTS



R-244

Olde English style railing replicated from London.



R-245

Close-up of English railing



R-246

English Post detail

EXTERIOR RAILING PROJECTS



R-247

Scarsdale post made of a custom cast aluminum.



R-248

Knuckle and Ring detail



R-249

Overall view of custom aluminum railing project

EXTERIOR RAILING PROJECTS



R-250

Modern linear railing down IPE porch.



R-251

Modern railings around outdoor dining space.



R-252

Modern railing along the bay front bulkhead.

EXTERIOR RAILING PROJECTS



All Items on this spread are
Shore Environment Approved



R-253

Horizontal bronze railings



R-254

Innovative post/railing connections on
bronze railings.



R-255

Bronze railings with stained IPE caprail

EXTERIOR RAILING PROJECTS



R-256

Bay side linear stair railing



R-257

Modern railing with outer post collars.



R-258

Modern bay side railing

EXTERIOR RAILING PROJECTS



All Items on this spread are
Shore Environment Approved



R-259

Custom railing for this shore home to emulate a yacht design.



R-260

Horizontal bulkhead railing



R-261

Custom pipe collar details to emulate yacht railing.

EXTERIOR RAILING PROJECTS



All items on this spread are
Shore Environment Approved



R-262

Powder coated horizontal rod railings



R-263

Azek posts, IPE caprail, and horizontal railing design.



R-264

Horizontal railing detail



EXTERIOR RAILING DESIGNS



R-265

Horizontal modern railings in white.



R-266

Modern railing design in powder coated silver.



R-267

Aluminum belly railing.

EXTERIOR RAILING DESIGNS



R-268

Modern exterior railing design for front staircase



R-269

Back terrace railing modern design for a waterfront home



R-270

Arts and crafts style railing in solid aluminum displays a taste of progressive design.

EXTERIOR RAILING DESIGNS



All Items on this spread are
Shore Environment Approved



R-271

Custom aluminum Gladwyne style railing



R-272

Twisted basket and scrollwork design.



R-273

Twisted basket design with gold highlighting.



R-274

Flat top standard railing along knee wall.

EXTERIOR RAILING DESIGNS



R-275

Railing and fence complimenting each other through matching designs.



R-276

Front porch classical railing



R-277

Arched 3-rail design

EXTERIOR RAILING DESIGNS



All Items on this spread are
Shore Environment Approved



R-278

Cable railing with IPE caprail



R-279

Custom modern aluminum terrace railing.



R-280

Solid bronze handrails

EXTERIOR RAILING DESIGNS



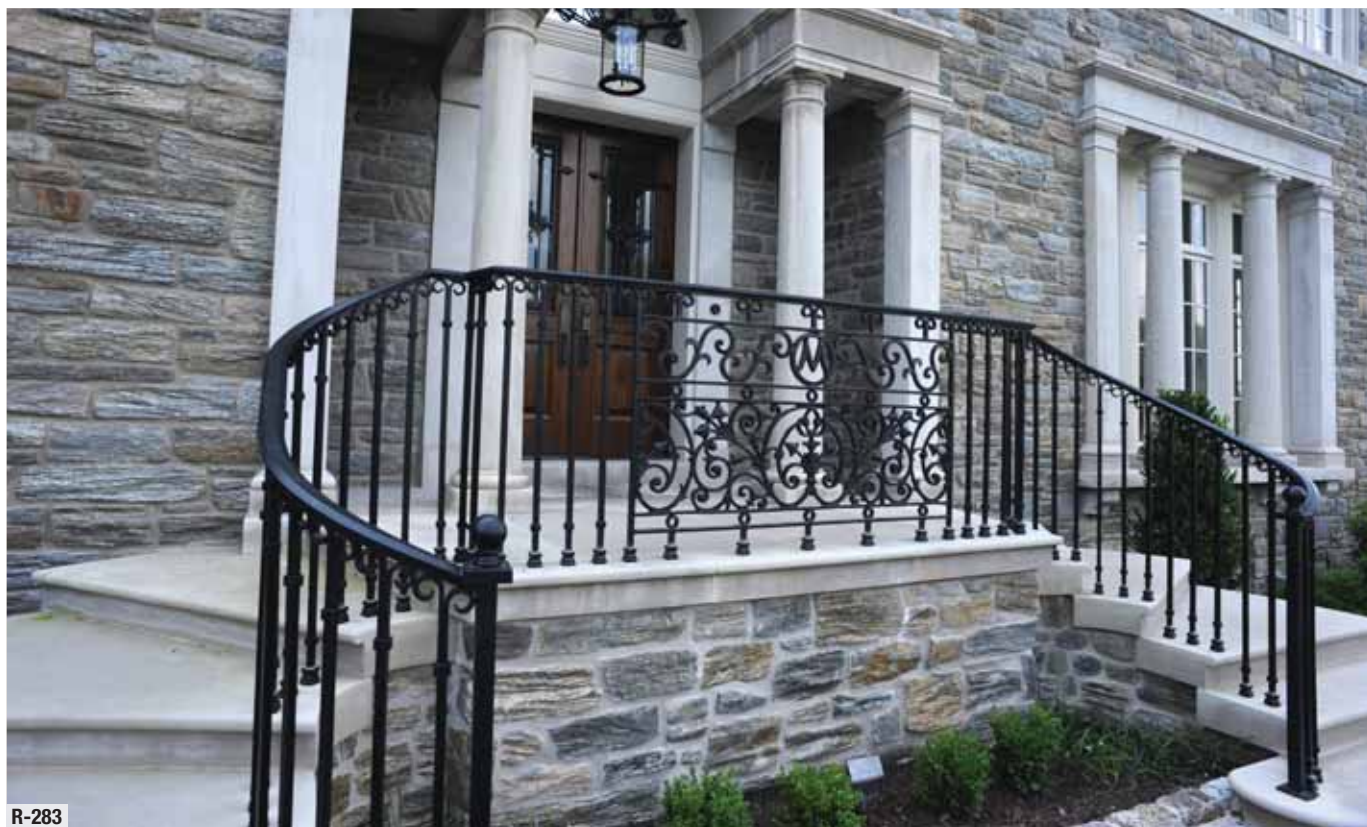
R-281

Custom cast aluminum railings



R-282

Stainless steel post and cable rail design



R-283

Wrought material railing on front entry steps

EXTERIOR RAILING DESIGNS



All items on this spread,
except R-283 and R-285, are
Shore Environment Approved



R-284

Tewksbury Railing at golden hour.



R-285

Cheshire Railing Style



R-286

Radiused entry railing in Ocean City, NJ

EXTERIOR RAILING DESIGNS



R-287

Gladwyne railing in aluminum on large wrap around porch.



R-288

Iron Quad-scroll railing



R-289

Tewksbury railing design

EXTERIOR RAILING DESIGNS

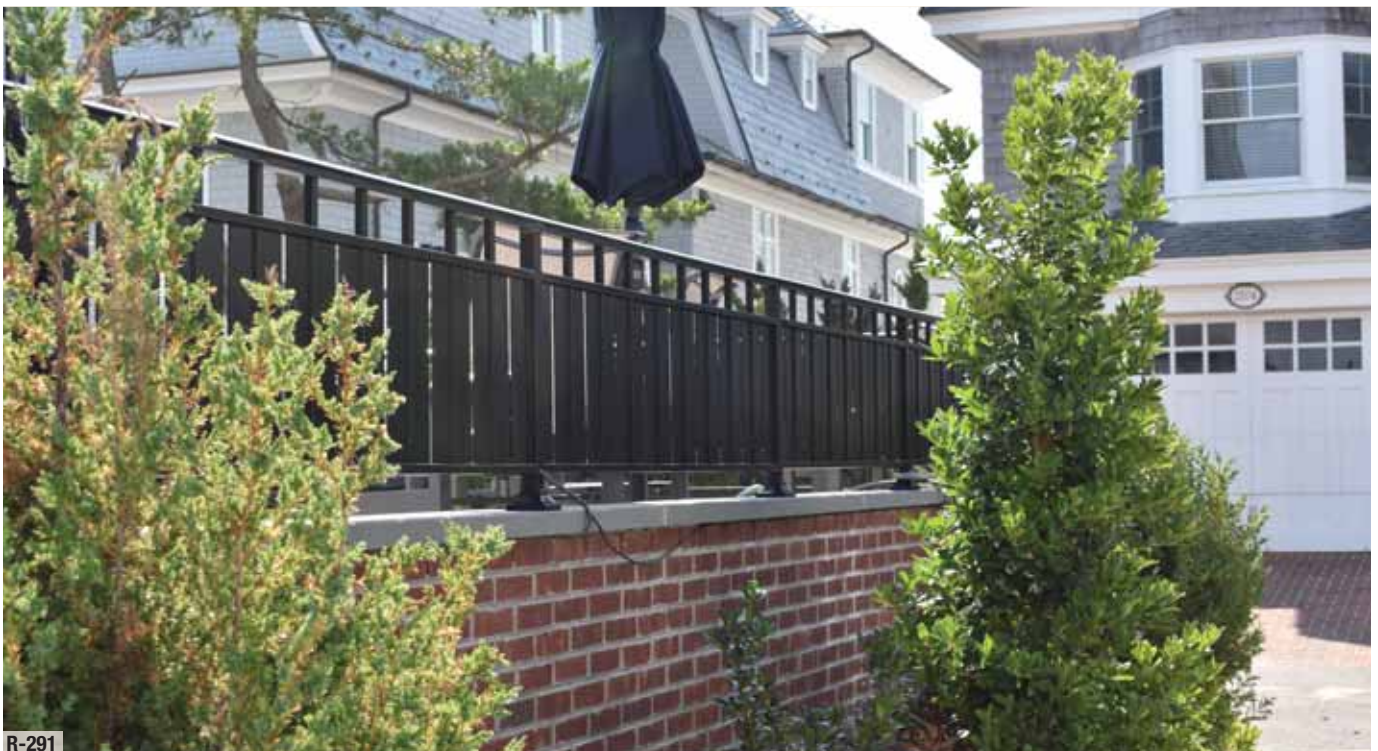


All Items on this spread are
Shore Environment Approved



R-290

Custom forged terrace railing



R-291

Contemporary railing with a privacy aspect

EXTERIOR RAILING DESIGNS



R-292

Custom radius railing



R-293

Glass panels on top of sea wall.

EXTERIOR RAILING DESIGNS



All items on this spread, except R-292 and R-296, are Shore Environment Approved



R-294

Grand entry railings for a Italian style shore home.



R-295

Fairweather railing overlooking dock in Longport, NJ



R-296

Side mounted railing design



R-297

Custom balcony railing design.



R-298

Aircraft grade aluminum railing curved balcony

BALCONIES

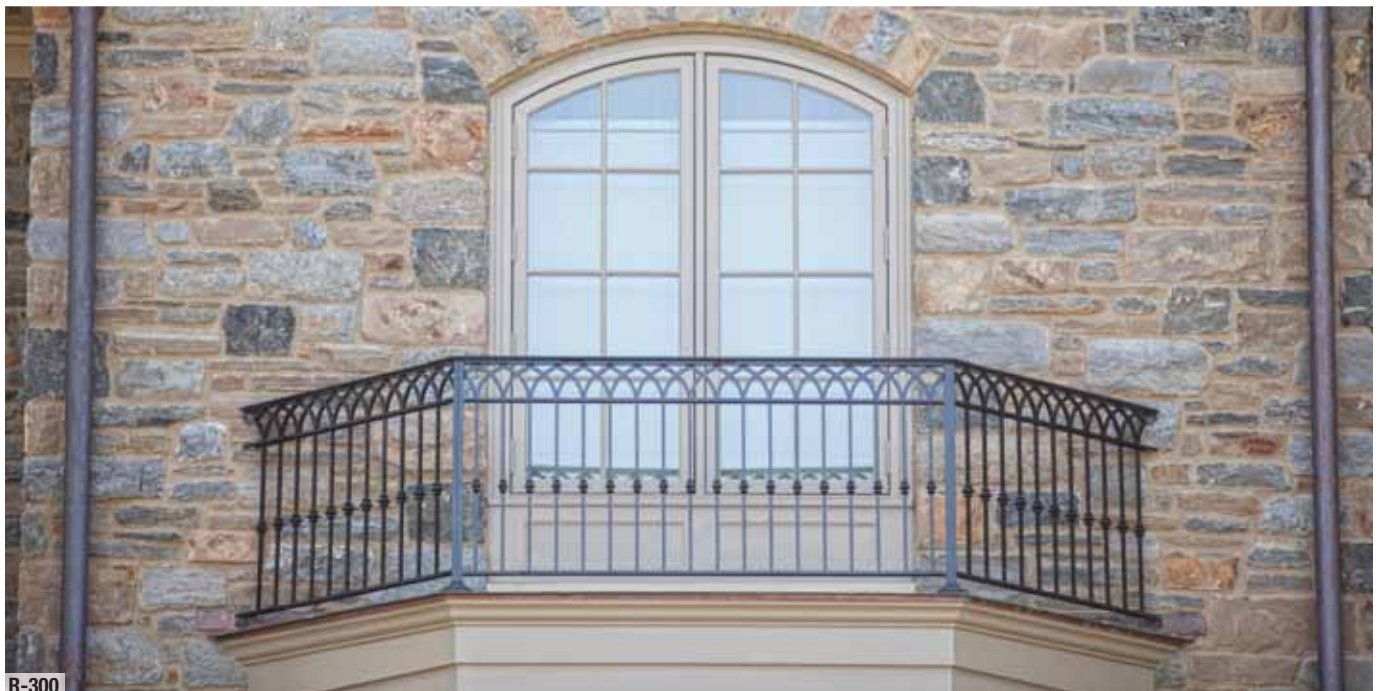


R-298 and R-299 are Shore Environment Approved



R-299

Inter-woven railing design



R-300

Custom Romeo balcony railing matches window design

BALCONIES



R-301
Belly railing with a picket/post detail



R-302
Custom railing with Roman Posts in Moorestown, NJ



R-303
Balcony railing in aircraft grade aluminum

BALCONIES



R-301 and R-302 are Shore Environment Approved



R-304

Widows walk railing



R-305

Custom iron railing for Romeo balcony in Wilmington, DE



R-306

Solid aluminum Juliet balcony in Ocean City, NJ

BALCONIES



R-307

Forged railing panels with a curved and belly design.



R-308

Forged aluminum Juliet balcony



R-309

Forged Iron balcony with scrolls and twists.

BALCONIES



R-308, R-309, and R-310 are
Shore Environment Approved



R-310
1920's balcony replication



R-311
Solid aluminum railing with 6" Hampton posts



R-312
Initial "B" adds a personal touch to this Romeo balcony railing

BALCONIES



R-313

Tewksbury railing with rosette on Juliet balcony in Downingtown, PA



R-314

Manchester railing creating a French balcony, Longport, NJ



R-315

Juliet balcony with Olde World Style floor in statuary bronze has timeless appeal

BALCONIES



R-316

Romeo balcony with forged Iron belly railing.



R-317

Hampshire Belly railing on bedroom terrace



R-318

Mesh railing provides safety and ease of navigating stairs



R-319

Aluminum Pipe handrails for a public school - front entrance.



R-320

Aluminum Pipe handrails for a public school- Side entrance.

COMMERCIAL PROJECTS



R-321

Fire tower railing that is contemporary and beautiful



R-322

Service entrance ADA railings for a public school.



R-323

Forged aluminum railing creates safety and ambiance for patrons of this upscale restaurant

COMMERCIAL PROJECTS



Beautiful classic railing design meets ADA compliance on this handicap ramp



Fire pit railing provides safety and beauty

COMMERCIAL PROJECTS



R-326

Commercial railing with an antique truck logo.



R-327

Restored Samuel Yellin balcony



R-328

Beautiful scroll work for bracing the Samuel Yellin



R-329

Antique brass ball post.



R-330

The authentic Samuel Yellin stamp on wrought iron



R-331

Iron center medallion on balcony restoration.



R-332

The amazing detail in restored wrought iron railing



R-333

Bronze finial restored above scrollwork restoration.



COMPASS
IRONWORKS

1406 WEST KINGS HIGHWAY

GAP, PA 17527

717-442-4500

WWW.COMPASSIRONWORKS.COM